

Pulsar Precision Door Panel Velcro Upgrade

Warning!

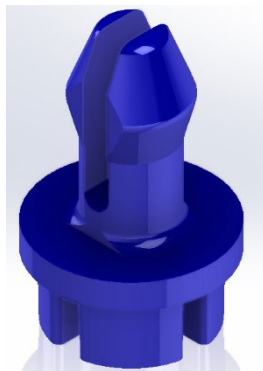
*** READ THIS FIRST ***

- The door clips have a ***specific orientation*** they must be installed in.

Note: Once they are glued they can't be removed and the door is trash

- The orientation is different for the hopper door, and the base doors
- The door clips for the hopper door are oriented with the gap horizontal.
- The door clips for the base doors are oriented with the gap vertical.
- The color of the clip should match the color of the door. *Both clip orientations are illustrated in blue below because the white clip will not show up on the*

paper



DOOR CLIP



HORIZONTAL
GAP
(HOPPER DOOR)



VERTICAL
GAP
(BASE DOORS)

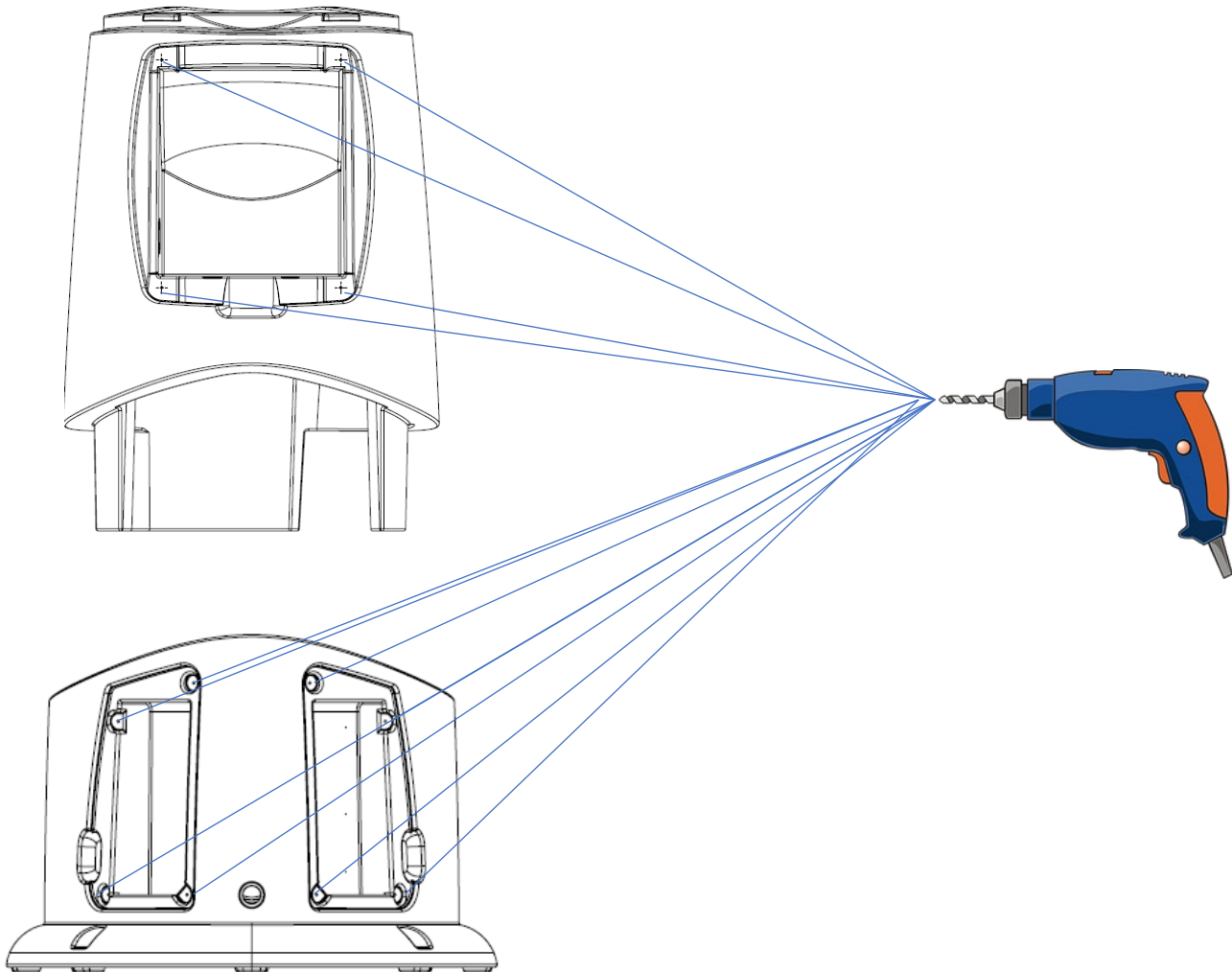
TOOLS YOU WILL NEED

1. Phillips head screwdriver.
2. 1/4" drill bit
3. 7/16" drill bit
4. SciGrip 16 polycarbonate cement
5. Small needle nose pliers (in some cases)
6. Nitrile, or latex gloves

BASE AND TANK

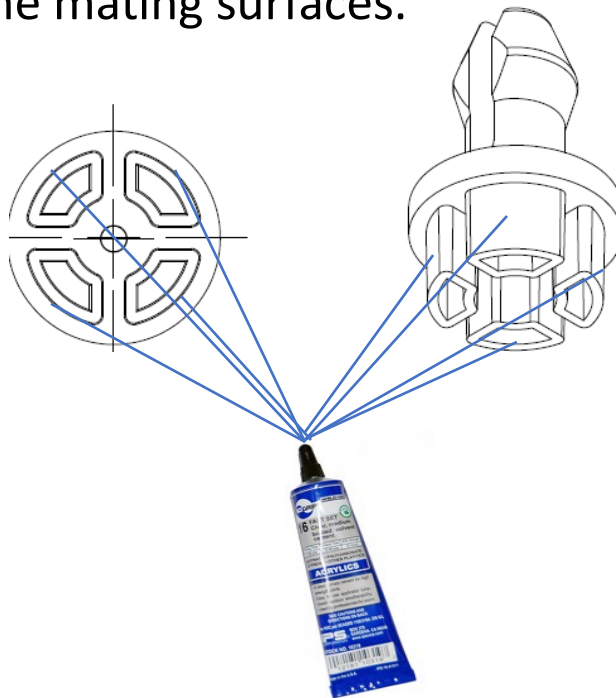
1. Use the Phillips head screwdriver to remove all the Velcro discs from the tank and base

2. Drill through the holes in the hopper body, and base left by the screws (12 holes). Be careful not to drill too deep.
3. The holes should be $\frac{7}{16}$ " diameter



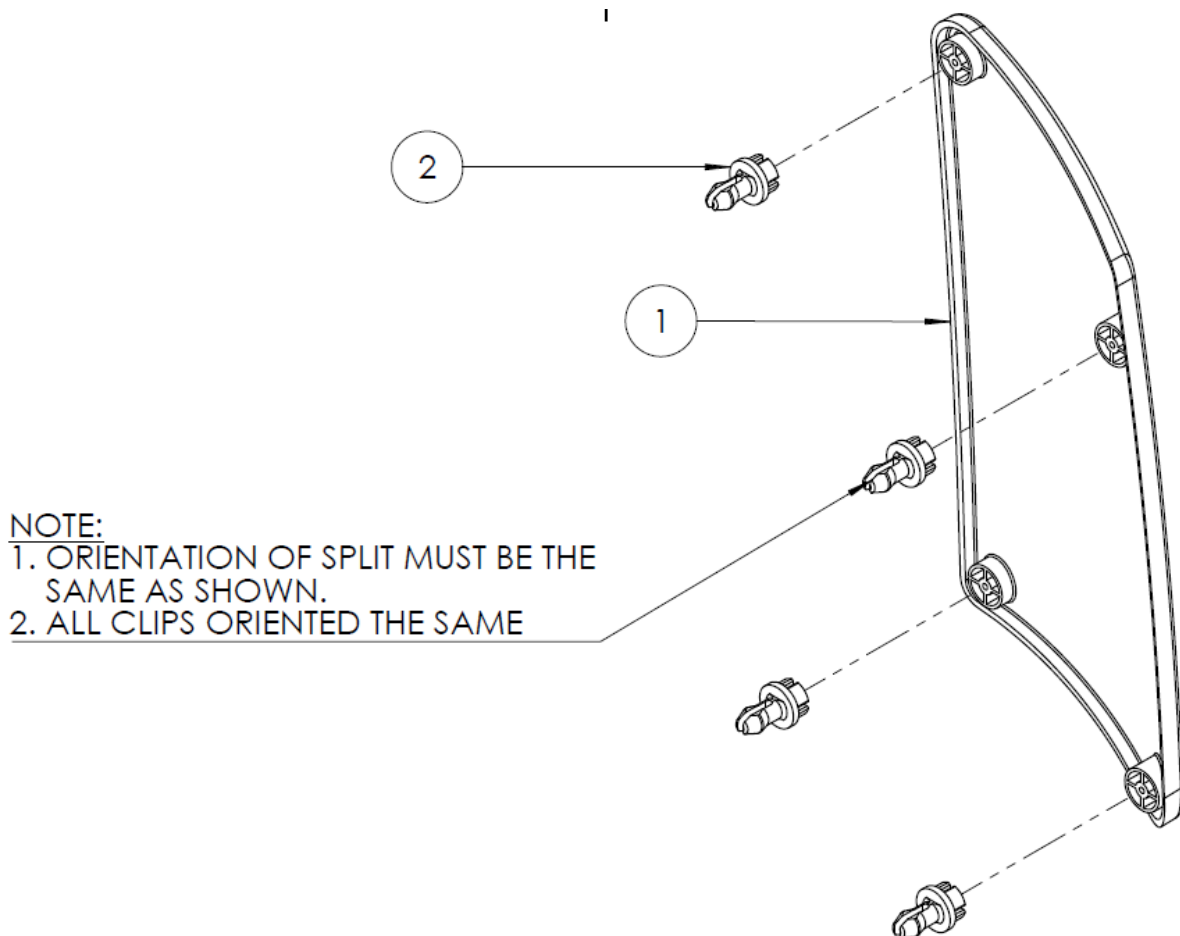
DOORS

1. Use the Phillips head screwdriver to remove all the Velcro discs from the doors.
2. The clips, and doors fit together like a lock and key.
3. Remember, the orientation of the clips is critical to them functioning properly.
 - a. Clip gap is horizontal for hopper door
 - b. Clip gap is vertical for base doors
4. The clips are color coordinated to match the doors
5. Apply SciGrip 16 polycarbonate cement to the clip on the mating surfaces.

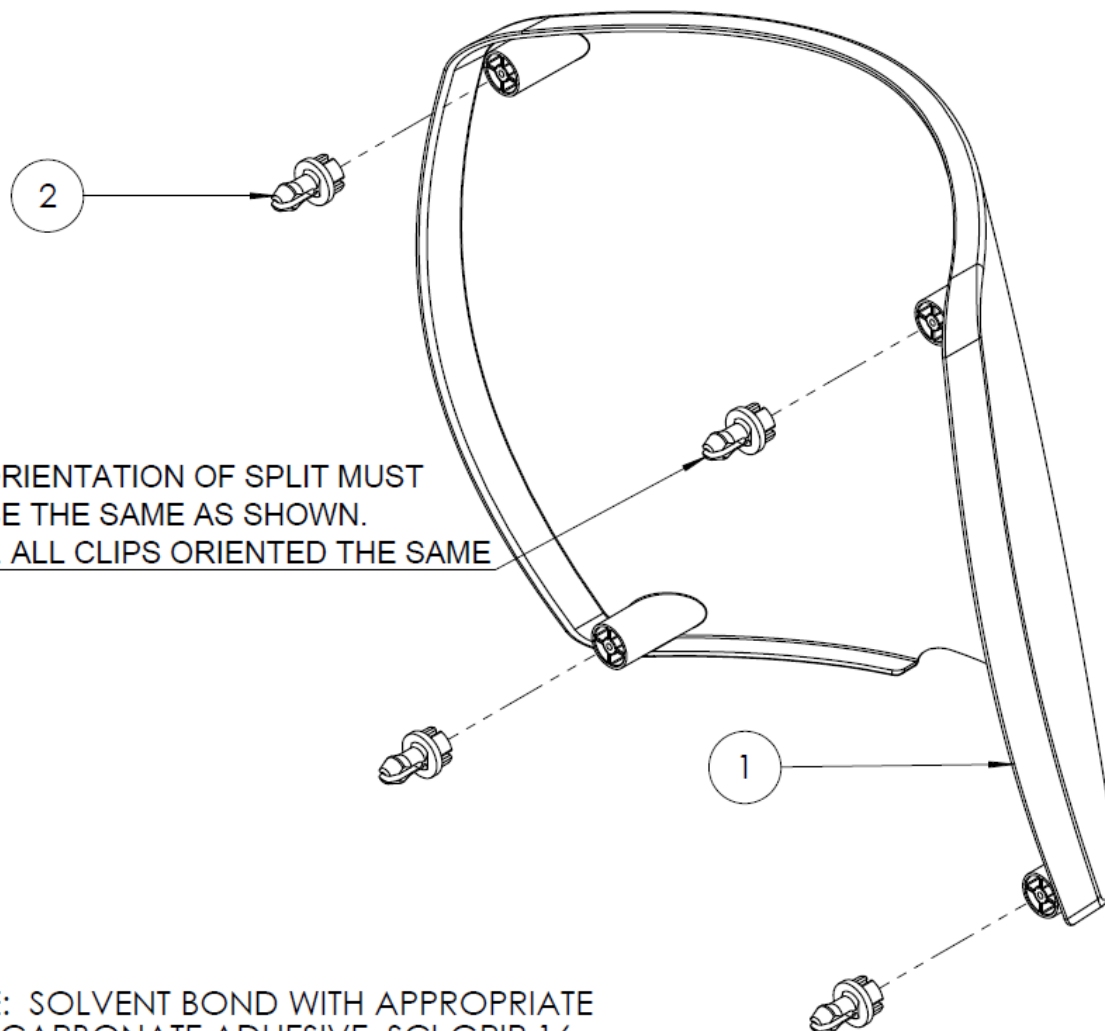


Scigrip 16

6. Press the clip into the door, being sure the orientation is correct and seated fully
 - a. vertical on the base doors.
 - b. Horizontal for the hopper door.
7. The cement cures to 85% in 24 hours. But, You should be able to install the doors after 15 minutes, but they cannot be removed until the next day.



NOTE: SOLVENT BOND WITH APPROPRIATE POLYCARBONATE ADHESIVE, SCI-GRIP 16 OR SIMILAR



NOTE:

1. ORIENTATION OF SPLIT MUST BE THE SAME AS SHOWN.
2. ALL CLIPS ORIENTED THE SAME

NOTE: SOLVENT BOND WITH APPROPRIATE POLYCARBONATE ADHESIVE, SCI-GRIP 16 OR SIMILAR